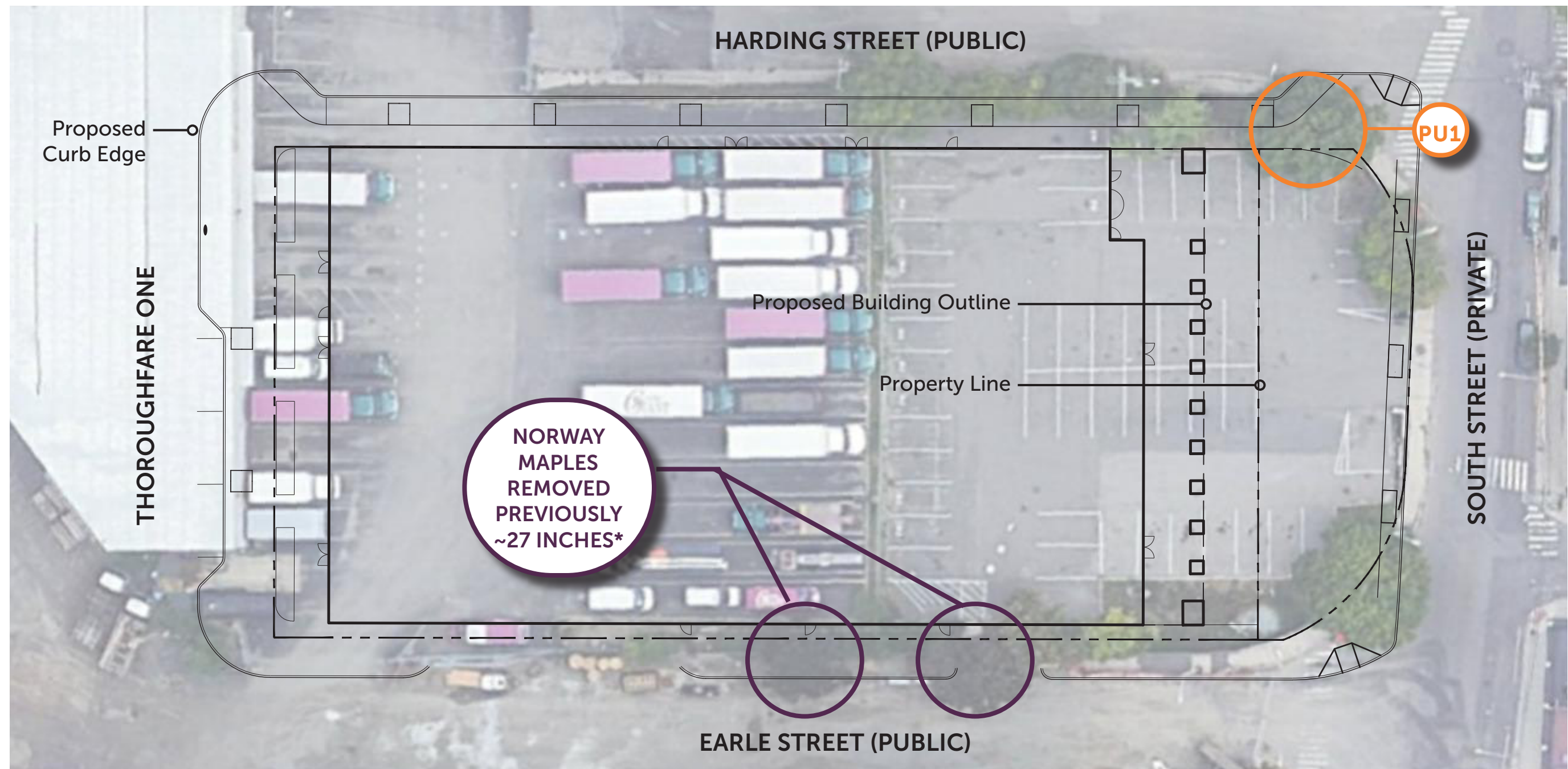


EXISTING PUBLIC TREE REMOVAL PLAN



Ref	Bot. Name	Common Name	DBH	Condition	Land	Proposed Action	Reason	Comment
PU1	Fraxinus americana	White Ash	15.4	Fair	Public	Remove	Conflict with proposed sidewalk/regrading	
		Total DBH to be removed	15.4					

SUMMARY:
1 EXISTING PUBLIC STREET
TREE TO BE REMOVED
TOTALING ~15 INCHES DBH

* THE UNPERMITTED REMOVAL OF APPROXIMATELY 27 CALIPER INCHES OF NORWAY MAPLES FOR 101 SOUTH IS BEING REPLACED THROUGH SUPPLEMENTAL TREE PLANTINGS FOR THOROUGHFARE 1. 60 TREES TOTALING 180 CALIPER INCHES WILL EXCEED THE BASE ZONING REQUIREMENT OF 41 TREES TOTALING 82 CALIPER INCHES.

EXISTING PUBLIC TREES



TREE PU1 : 15.4" DBH White Ash (GOOD CONDITION)

EXISTING PUBLIC TREES - PREVIOUSLY REMOVED AS A PART OF 101 SOUTH PROJECT

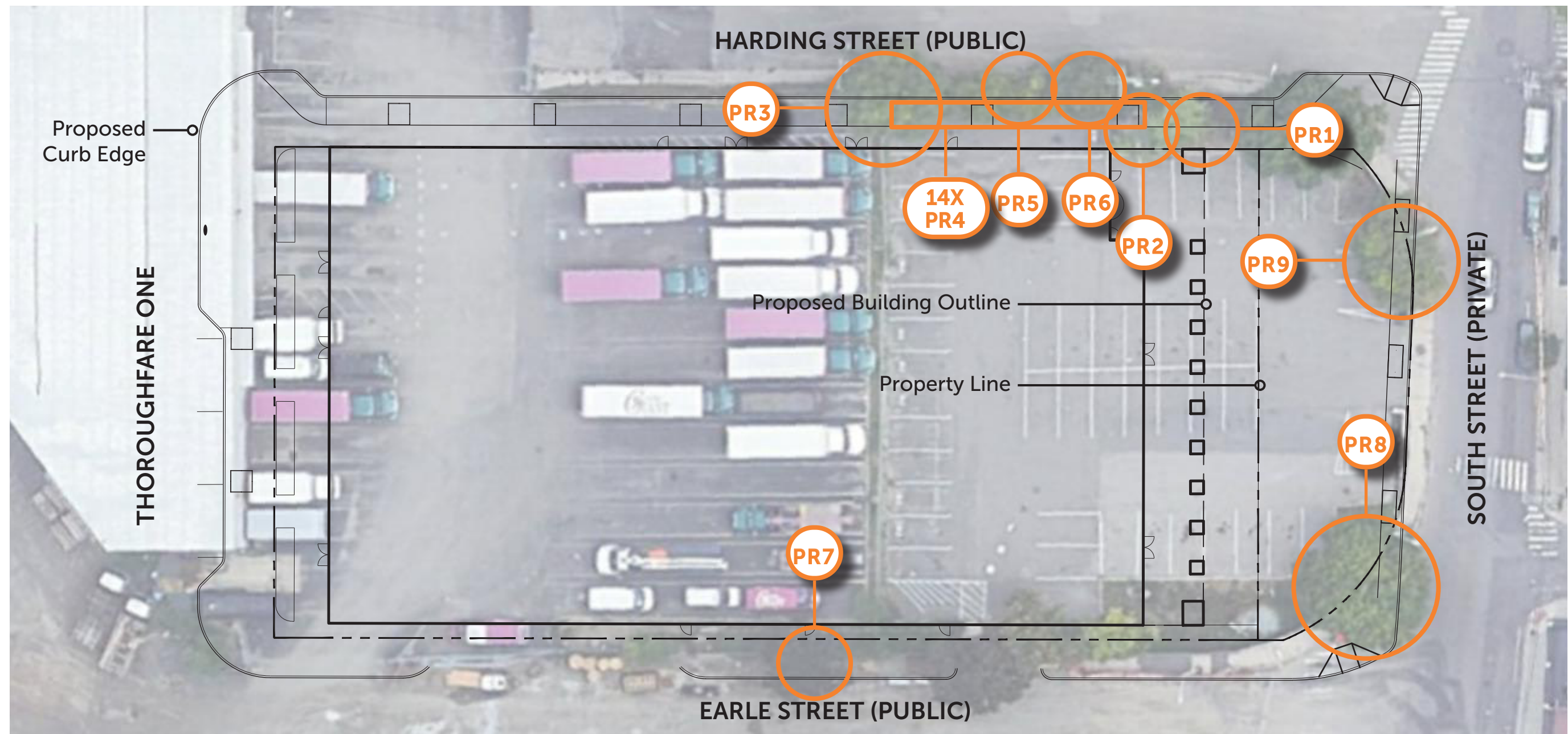


PREVIOUSLY REMOVED: 12.9" DBH Norway Maple (FAIR CONDITION)



PREVIOUSLY REMOVED: 13.9" DBH Norway Maple (FAIR CONDITION)

EXISTING PRIVATE TREE REMOVAL PLAN



Ref	Bot. Name	Common Name	DBH	Condition	Land	Proposed Action	Reason	Comment
PR1	Pinus strobus	White Pine	~10"	Fair	Private	Remove	Conflict with proposed sidewalk/regrading	
PR2	Pinus strobus	White Pine	~8"	Dead	Private	Remove	Conflict with proposed sidewalk/regrading	Exempt
PR3	Ailanthus altissima	Tree of Heaven	~20"	Fair	Private	Remove	Conflict with proposed sidewalk/regrading	Invasive/Exempt
PR4	Thuja occidentalis	Northern White Cedar	~3" (x14)	Poor	Private	Remove	Conflict with proposed sidewalk/regrading	x14/Exempt
PR5	Ailanthus altissima	Tree of Heaven	~6"	Fair	Private	Remove	Conflict with proposed sidewalk/regrading	Invasive/Exempt
PR6	Ailanthus altissima	Tree of Heaven	~14"	Fair	Private	Remove	Conflict with proposed sidewalk/regrading	Invasive/Exempt
PR7	Ailanthus altissima	Tree of Heaven	~8"	Fair	Private	Remove	Conflict with proposed sidewalk/regrading	Invasive/Exempt
PR8	Fraxinus americana	White Ash	~15"	Fair	Private	Remove	Conflict with proposed sidewalk/regrading	
PR9	Fraxinus americana	White Ash	~12"	Fair	Private	Remove	Conflict with proposed sidewalk/regrading	
Total Qualifying DBH to be removed			~37"					

SUMMARY:
3 EXISTING SIGNIFICANT
QUALIFYING PRIVATE
TREES TO BE REMOVED
TOTALING ~37 INCHES DBH

EXISTING PRIVATE TREES



TREE PR1 : 10" DBH White Pine (FAIR CONDITION)



TREE PR2 : 8" DBH White Pine (DEAD)



TREE PR3 : 20" DBH Tree of Heaven (FAIR CONDITION)



EXISTING PRIVATE TREES



TREE PR4 : 14X 3" DBH Cedars (POOR CONDITION)



TREE PR7 : 8" DBH Tree of Heaven (FAIR CONDITION)

EXISTING PRIVATE TREES

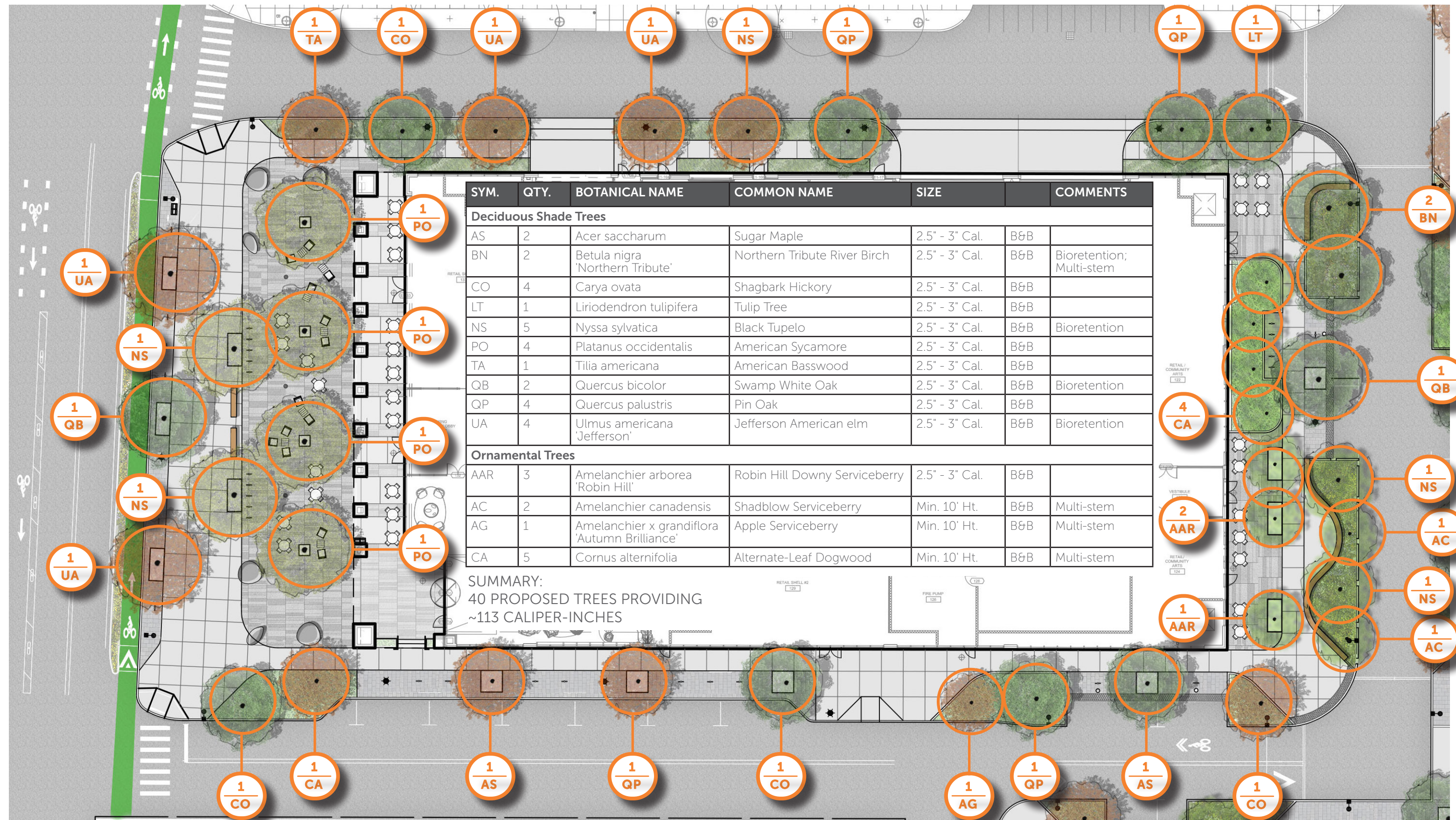


TREE PR8 : ~15" DBH White Ash (FAIR CONDITION)



TREE PR9 : ~12" DBH White Ash (FAIR CONDITION)

PROPOSED TREE PLAN



PROPOSED TREE SPECIES



AMELANCHIER CANADENSIS



CORNUS ALTERNIFOLIA



CARYA OVATA



BETULA NIGRA 'NORTHERN TRIBUTE'



ACER SACCHARUM



NYSSA SYLVATICA



QUERCUS BICOLOR



QUERCUS PALUSTRIS



TILIA AMERICANA



ULMUS AMERICANA 'JEFFERSON'

PROPOSED TREE SPECIES



PLATANUS OCCIDENTALIS



LIRIODENDRON TULIPIFERA



AMELANCHIER ARBOREA 'ROBIN HILL'



AMELANCHIER X GRANDIFLORA
'AUTUMN BRILLIANCE'